



NCTS

www.smartstationme.com

**THE ULTIMATE
THIN CLIENT SOLUTION
WITH AMAZING PERFORMANCE
ON GREEN TECHNOLOGY
REVOLUTION**



Compared to traditional PC, Thin Client can benefit enterprise users with higher IT management efficiency, productivity and lower IT cost. SMARTSTATION has a complete Thin Client product line for customers, including single display, multi-display and smart card application, moreover, all kinds of Thin Client are durable, quiet and with low power consumption, allowing enterprise users to reduce Total cost of Ownership effectively, SMARTSTATION Thin Client series are available with Smart Linux, Windows CE and Windows Embedded Standard 2009 OS.

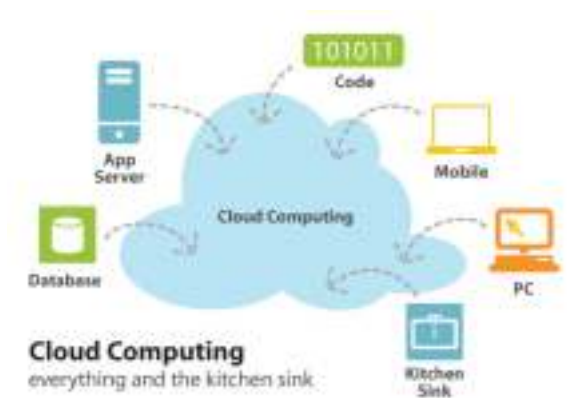
The SMARTSTATION Thin Client is the smallest, most advanced thin client on the market. It combines great performance, stateless operation, low power consumption, remote management and simple device setup and imaging. This small, lightweight, solid state unit can be mounted on the back of monitor, making SMARTSTATION Thin Client ideal for any space-constrained environment.

SMARTSTATION is dedicated to be the professional thin client and embedded computing provider for over 14 years and now we are one of the top independent manufacturer of thin client. With providing design, manufacturing and service support functions for embedded computing; SMARTSTATION is your best embedded solution partner to empower more efficiency and safety for your e-World.

Smart 2590 Thin Clients comes with Linux Embedded Operating System with protocols like RDP 7.0, Citrix Receiver, VM Ware VDI Client with RDP & PCOIP Support, Red Hat VDI support, it also comes with XRED USB redirection printing support and CUPS (Common Unix Printing Support) allows user to share locally installed printers**, Inbuilt Firefox Ice weasel Browser, and Libre Open Office 4.1, SAP GUI, PDF Reader enables users to work independently for locally supported applications. Also provided support for USB Block / Allow in RDP Session, can support with 32 bit graphics. Having tool to identify network functionality. Font smoothing and Desktop Background is also supported. It can support Server Operating system Microsoft 2003, 2008, 2012, Desktop Operating System like Microsoft Windows XP, Windows 7, and Windows 8. It also supports Linux Environment with XRDP.

Smart 2590 are also available with Microsoft Windows Embedded XP SP3, Windows Embedded Std 7E, with IE8/9/10, Citrix Receiver, VM View, PDF Reader, RDP 7.0 and Enhance Write Filter utility with USB accessibility control. Options to install other customized software as required.

Smart 2590 are best suitable for Corporate Houses, Education, University, Large & Medium Scale Industries, Multi Specialty Hospitals, Chartered Accountants, BPOS and KPOS.



Introduction



very low cost



easy to manage



ultra low power consumption



stable & reliable



better performance



fanless design

SMARTSTATION Thin Client Benefits



Green

Lower power consumption for energy saving and reduce CO2 for earth saving.

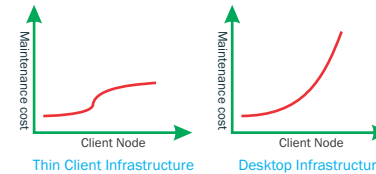
Our products focus on reducing, reusing and recycling materials used in our manufacturing operations.

Our environment compliance effort including ISO 9001:2008 Certification.



Economy

Lower power cost of ownership (TCO): Save more than 50% off cost than using traditional desktops for energy saving and maintenance cost saving.



Durable

Fanless design for long life span, noise free and higher system reliability. Our thin client components are used industrial level and solid parts for long lifespan.



Secure

Since the software becomes entirely confined to the servers, thin clients are protected from the use of unauthorized software or the introduction of viruses. Unlike PCs and traditional laptops, thin clients are locked down and offer greater security against theft, damage, malware, spyware and viruses.

Secure 

Eco Friendly 

Power Saver 

Maintenance Free 

Benefits

SMART CCCM Centralized Management

CCCM (Cinfin Cloud Client Management Software) supports multi-platform, multi-OS-type. Contains functions such as remote assistance, batch deployment, software dispatch, application upgrade etc. With unified management interface, to achieve centralized management and group management.

Unified management interface, adapt to centralized management and group management.

Provides unified management interface, user account, roles (administrator privileges), resources (cloud client) separated, to achieve centralized management and group management.

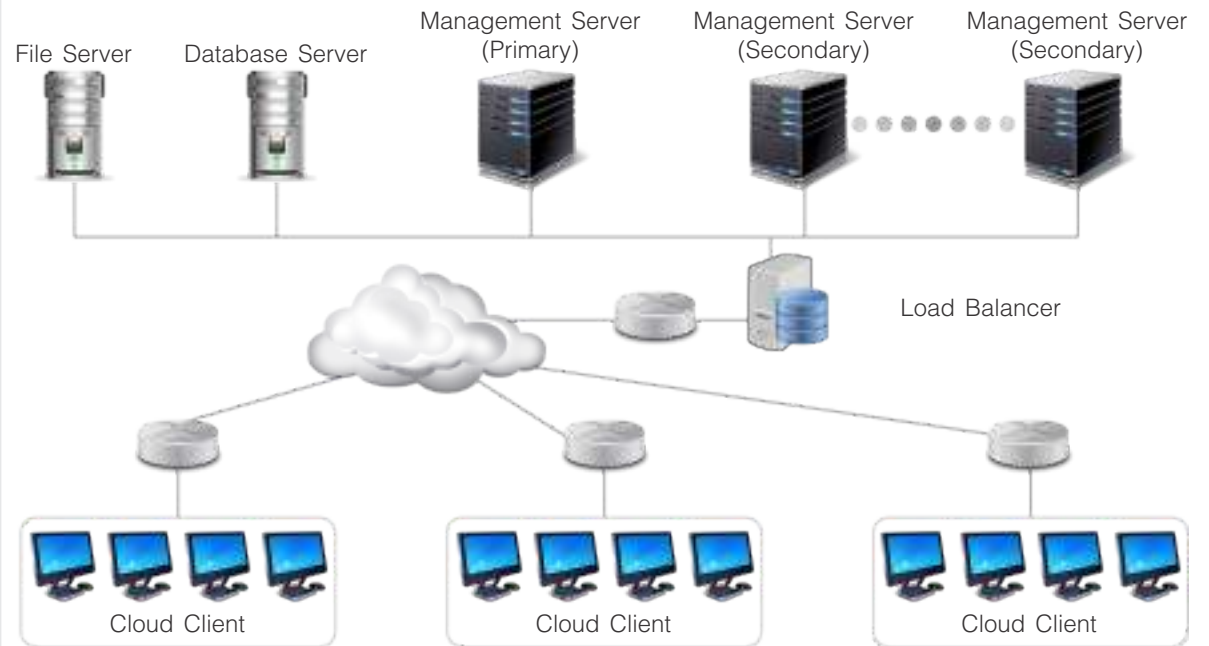
Standard protocol, fully management

The solution can manage various cloud clients with different OS (XPe/WES7/COS*). The solution defined a standard communication interface, which is convenient to manage cross-platform device.

Excellent user experience

While support instant upgrade, also support automatic upgrade while cloud client shutting down or Non-working time, ensure user not be interrupted while working.

network topology map



Note : Less than 3,000 units under management, no need to install Load Balancer and Secondary Management Server.

Management



SMART CCCM Centralized Management Functions

Function Item	Function description
System configuration	Remotely system configuration and software configuration could be set remotely, the common system configurations contain Display, Date and Time, System User, Network, Browser, Printer, Connection Item and other software configuration and template could be applied as well as application configuration could be set in batch.
Remote Assist	Issues could be solved by remote analysis ways : Remote monitoring, Screen shot, Instant Messaging etc.
Power Management	"Turn Off", Log Off", "Restart", "Wake up", could be done remotely and intelligently.
Message Management	Notification or message could be sent from administrator to single cloud client or batch cloud client, and messages could be done instantly between client and server (windows).
File Deployment	Application installation package could be dispatched fastly and installed safely, and you can copy file to client, deploy operating system or upgrade patch.
Log Management	Record the time, content and result of the operation by administrator. It is convenient for administrator to track in the future.
Device Security	Disable or enable peripherals.

Management

smart 2590



NCTS

Processor	CPU	AMD Fusion T40N 1.0GHz Dual Core
Memory	RAM	2GB DDR3 RAM
	Storage	8GB Flash (Expandable Upto 32 GB)
I/O Peripheral Support	Serial	None
	Parallel	None
	USB 2.0	x7 (Front x1, Rear x6)
	DVI-I	x1
	PS/2 KB & Mice	None
Networking	LAN	x1 (10/100/1000 Base-T Fast Ethernet, RJ-45)
	Wireless	(optional) Built-in Support 802 11b/g/n protocol
Display Support		DVI-I --> DVI-D+VGA
	Resolution	VGA : up to 2560 x 1600@60Hz DVI: up to 1920 x 1200@60Hz Up to 32bit
Audio	Line-Out & Mic-in	Full 16bit stereo & 8bit mini Mic
Physical Characteristics	Dimension/Weight	Terminal Box
		156.4mm(L) x 130mm(W) x 37mm(H) / 0.63kg Packing Single Box : 325mm(L) x 220mm(W)x 85mm (H) / 1.37kg
Mountings	VESA Bracket	VESA Mounting Kit
Power	Adapter	12v/3A DC Power
		Worldwide auto-sensing 100-240V AC, 50/60 Hz consumption Maximum 14.5 Watts
Environment	Operation Temperature	0 C - 40 C
	Relative Humidity	30% to 90% non-condensing
Firmware Features (System dependant)		Linux
		OS SMART Linux OS, Windows XPe, Windows Embedded Compact 7 (CE7) Serer OS Support Terminal Sever Edition Windows 2003 server and Windows 2008 server Citrix XenDesktop / XenApp Server VMware ESX Server, SPICE client RDP resident Citrix ICA support Vmware view client, Centerm CTSS/TSX/CVUDB clients
Server OS Support		Microsoft Windows Terminal Server 2003, 2008 & 2012 Citrix XenApp / Cirtix Presentation Serve / REDHAT virtualization
Set-up and configuration		Boot from local Flash User interface language U S English Keyboard Language support U S English standard



Specifications

[Home](#)
[Introduction](#)
[Benefits](#)
[Management](#)
[Comparision](#)
[Contact](#)
www.smartstationme.com

smart 2590



NCTS



	Smart 2350	Smart 2530	Smart 2590	Smart 9150	Smart 9150C	Smart 9190
Processor	Cortex 1.5 GHZ DC	ARM A9 1.0 GHz	AMD FUSION 1.0 GHZ DC	INTEL ATOM 2500 1.86 GHz DC	INTEL Celeron J1800 2.0 GHz	INTEL ATOM CEDAR TRAIL D2550
RAM	1 GB	512 MB	2 GB	2 GB	2 GB	2 GB
DOM	4 GB	4 GB	8 GB	8 GB	8 GB	8 GB
Parallel Ports	NO	NO	NO	YES	NO	YES
Serial Port	NO	NO	NO	YES	YES	YES
Display	VGA / DVI	VGA	VGA / DVI	VGA	VGA & HDMI	HDMI & DVI
USB	5 USB	4 USB	7 USB	6 USB	6 USB	6 USB
KBD/Mouse Ports	USB	USB	USB	PS2	PS2	PS2
Embedded O/S	LINUX	LINUX	LINUX / WINDOWS	LINUX / WINDOWS	LINUX / WINDOWS	LINUX / WINDOWS
Wired/Wireless	WIRED/WIRELESS	WIRED/WIRELESS	WIRED / WIRELESS	WIRED / WIRELESS	WIRED / WIRELESS	WIRED/WIRELESS
Ethernet	10/100/1000 MBPS	10/100 MBPS	10/100/1000 MBPS	10/100/1000 MBPS	10/100/1000 MBPS	10/100/1000 MBPS
Power Supply	EXTERNAL 15 W	EXTERNAL 15 W	EXTERNAL 36 W	EXTERNAL 60 W	INTERNAL 60 W	EXTERNAL 36 W
Power Consumption	6 Watts	3.3 Watts	14.5 Watts	25 Watts	25 Watts	14.5 Watts
Dimension (in MM)	156x130x37	93.5x93.5x20.41	165x132x30	215x190x60	215x190x60	215x189x50
Warranty	3 Years	3 Years	3 Years	3 Years	3 Years	3 Years
Vesa Mounting	YES	YES	YES	YES	NO	YES

Comparison

[Home](#)
[Introduction](#)
[Benefits](#)
[Management](#)
[Specifications](#)
[Contact](#)
www.smartstationme.com

NEW COMPUTER TECHNOLOGY SOLUTION LLC



U.A.E.

P.O.Box 95055,
Sharjah.
UAE.

Cell. +971 528663955
Tel. +971 6 5512299

sales@smartsationme.com



HONGKONG

Unit 04, 7/F, Bright Way Tower,
No. 33, Mong Kok Road,
Kowloon, Hongkong,

Cell. +86 1371 4623 640

sales1@smartsationhk.com



SURENDRANAGAR

2nd Floor, Manivir Complex,
Vitthal Press Road,
Surendranagar-363001,
Gujarat, INDIA.

Cell. +91 982 420 8213
+91 937 465 1621

sales@smartsation.in

AHMEDABAD

202, Manas Complex,
Opp. Star India Bazar,
Satellite Road, Ahmedabad-380015,
Gujarat, INDIA

Cell. +91 982 420 8213
+91 937 465 1621

sales@smartsation.in



©2014 The SMARTSTATION logo and references are trademarks of SMARTSTATION. Other product names mentioned herein are for identification purposes only and may be trademarks and/or registered trademarks of their respective companies. All specifications are subject to change without notice. Whilst we make every effort to ensure the accuracy of the details, specifications, models, images and benefits featured in this datasheet, we cannot be held responsible for any errors and/or omissions. If you have any queries regarding SMARTSTATION products. Some features require support by server operating system and protocol.

Contact

[Home](#)

[Introduction](#)

[Benefits](#)

[Management](#)

[Specifications](#)

[Comparision](#)

www.smartstationme.com