



THE ULTIMATE
THIN CLIENT
SOLUTION
WITH AMAZING
PERFORMANCE
ON GREEN
TECHNOLOGY
REVOLUTION



smart E-Satchel S-02



NCTS

Intel® EDUCATION SOFTWARE

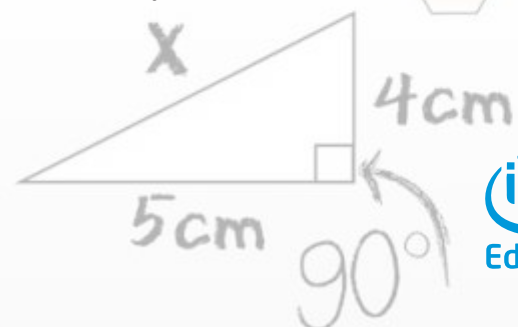
This Intel Education Tablet includes a comprehensive suite of applications designed to foster communication, collaboration, problem solving, critical thinking, and digital literacy in students. It empowers educators to efficiently manage their classroom while enabling IT to promote safe computing practices.

RUGGED DESIGN

SMART Education 2 in 1 tablet combines a shock-absorbing, rubber mid-frame with a tough, easy-to-grip textured exterior that can handle a fall from 70 cm and take life in a backpack without scratching or denting.

STYLUS WITH TABLET

Students can draw, take notes and navigate intuitively using their fingers and multi-touch gestures. For fine and detailed work, the included stylus offers precise control.



Introduction

home

Benefits

Apps

Specifications

Contact

www.smartstationme.com

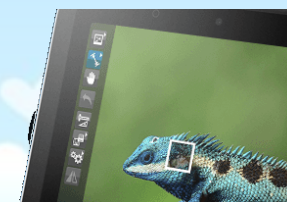


Stylus with tablet

Students can draw, take notes and navigate intuitively using their fingers and multi-touch gestures. For fine and detailed work, the included stylus offers precise control.

Cameras

It has twin, onboard cameras, 1.2 MP front and 2MP rear, so students can work collaborative via video, shoot footage and capture stills to document projects. Students can snap on the included magnifying lens and turn the rear camera into a microscope.



Temperature Probe

Make quantitative lab work more immediate and interactive with temperature probe and companion app. Students can sample temperatures, analyze and graph results as their experiments unfold.

Magnifying Lens

Transform lab camera into a microscope that can reveal the hidden structures and wonders of the world using this simple, snap-on lens that adds magnification to the 5MP camera.



Unique Features

1. Built to withstand bumps and accidental drops of 70 cm1
2. Comes with a temperature sensor probe, front and rear cameras, and a snap on magnification lens
3. Up to 8 hours battery life to last a full school day2
4. Passive stylus with pen-like grip
5. Pre-loaded Intel® Education Software to engage students using 21st century technology tools

Benefits



Intel® Education Application Kit



CLASSROOM MANAGEMENT

Classroom Management is a collaborative classroom-learning solution used to deliver lesson content, receive student work, administer assessments safely and securely, and eliminate online distractions. The app provides educators with tools to deliver interactive lessons, monitor student learning with quiz functions, administer assessments, transfer files, monitor student screens, and chat with individual students.



SPARKvue*

SPARKvue brings real-time sensor data collection, visualization and analysis to an inquiry-based science learning environment. Students use modern science tools to explore the world around them, building science and technology literacy as well as developing critical thinking and problem solving skills.



Intel® Education Lab Camera by Intellisense

Lab Camera is a science exploration application with seven tools that help students carry out observations and measurements using the tablet's built-in camera. It's a cost effective way to enhance a STEM curriculum and promote scientific inquiry.



Pixlr*

Pixlr is a fun and powerful photo editor that lets students quickly crop, rotate, and finetune any picture. Advanced features like masking, double exposure, and blending help students transform their photos into works of art.



Kno™app

The Kno™app is an interactive PDF e-Reader designed for education. It can enhance the learning experience by helping to increase student engagement and improve study habits. Students can make more efficient use of study time using highlighting, note taking and journal features. These tools assist educators in implementing study methodologies to help improve student comprehension and retention.



McAfee® Mobile Security

Today's students live online completing homework assignments, doing research, and socializing with classmates. All the advantages of digital life also come with increasing security risks. McAfee AntiVirus Plus enforces safe and secure computing practices by proactively protecting devices from exposure to malware.

Apps

home

Introduction

Benefits

Specifications

Contact

www.smartstationme.com

smart E-Satchel S-02



NCTS

Processor Intel Cherry Trail-Z8300, Quad Core

2 GB DDR3L Memory & 32 GB eMMC Storage

LCD/Touch Panel 10.1" 1280 x 800 TN, Capacitive Multi touch

Stylus Capacitive Stylus

Network 802.11 b/g/n WLAN + BT 4.0

Battery 6900 mAh

Audio Integrated Audio, Dual Speaker, Mic

System I/O Micro-USB (OTG), Audio-jack, Micro-SD, Micro-HDMI,

Sensor Default, G-Sensor

Camera Front 2 MP , Rear 2 MP

Ruggedness 90 CM Drop , Water Resistance, IP54

OS Windows 8.1 Bing

Micro Lens , Thermal Prob

Security McAfee® Antivirus



Specifications

[home](#)

[Introduction](#)

[Benefits](#)

[Apps](#)

[Contact](#)

www.smartstationme.com

NEW COMPUTER TECHNOLOGY SOLUTION LLC



U.A.E.

P.O.Box 95055,
Sharjah.
UAE.

Cell. +971 528663955
Tel. +971 6 5512299

sales@smartsationme.com



HONGKONG

Unit 04, 7/F, Bright Way Tower,
No. 33, Mong Kok Road,
Kowloon, Hongkong,

Cell. +86 1371 4623 640

sales1@smartsationhk.com



SURENDRANAGAR

2nd Floor, Manivir Complex,
Vitthal Press Road,
Surendranagar-363001,
Gujarat, INDIA.

Cell. +91 982 420 8213
+91 937 465 1621

sales@smartsation.in

AHMEDABAD

202, Manas Complex,
Opp. Star India Bazar,
Satellite Road, Ahmedabad-380015,
Gujarat, INDIA

Cell. +91 982 420 8213
+91 937 465 1621

sales@smartsation.in



©2014 The SMARTSTATION logo and references are trademarks of SMARTSTATION. Other product names mentioned herein are for identification purposes only and may be trademarks and/or registered trademarks of their respective companies. All specifications are subject to change without notice. Whilst we make every effort to ensure the accuracy of the details, specifications, models, images and benefits featured in this datasheet, we cannot be held responsible for any errors and/or omissions. If you have any queries regarding SMARTSTATION products. Some features require support by server operating system and protocol.

[home](#)

[Introduction](#)

[Benefits](#)

[Apps](#)

[Specifications](#)

[Contact](#)

www.smartstationme.com